



# PoINT Jukebox Manager

File system for Optical

Optical jukebox systems are designed for long-term archiving of electronically generated documents and are therefore utmost convenient to match legal storage regulations. PoINT Jukebox Manager provides quick and easy integration of optical jukeboxes into existing IT infrastructures by a standardized software interface. Thus, applications and users can utilize the optical jukebox storage similarly to hard disk systems.

## TRANSPARENT FILE SYSTEM ACCESS

PoINT Jukebox Manager provides a native Windows file system on the Windows server representing the optical jukebox. This file system or even single sub directories (including required access permissions) can be enabled within the local area network as CIFS share.

## OPTIMIZED PERFORMANCE BY CONFIGURABLE CACHING

The flexible cache functionality of PoINT Jukebox Manager meets individual requirements regarding the overall system performance. Write and read caches can be configured separately.

## MEDIA QUALITY CHECK

To ensure availability of archived data in the long-term, PoINT Jukebox Manager checks file integrity either upon request or automated during defined periods. Test logs are provided to the system administrator to enable additional backup action if required.

## OFF-LINE MEDIA MANAGEMENT

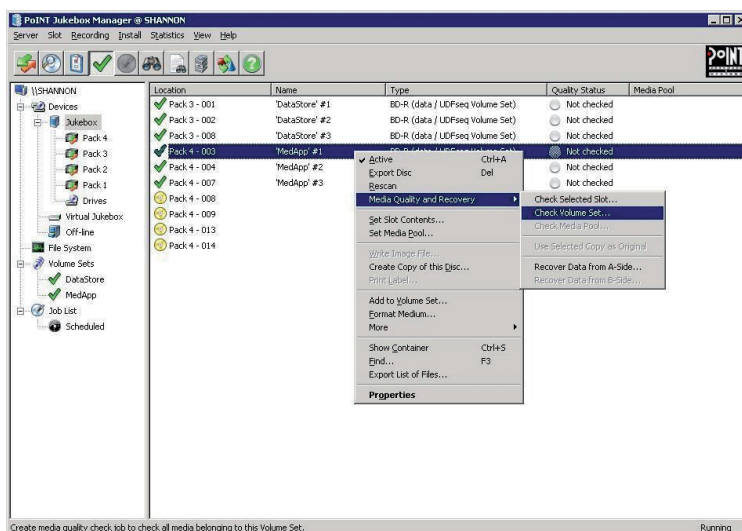
Off-line media are managed in the internal database of PoINT Jukebox Manager. Therefore, archived data can be localized on corresponding media by the administrator anytime. The integrated search function supports retrieval of files and file versions.

## FEATURES

- Transparent file system access
- Optimized performance by configurable caching
- Media quality check
- Off-line media management
- Automated mirroring
- Windows Cluster support

## BENEFITS AND ADVANTAGES

- Fulfillment of compliance demands
- Decreased energy cost
- Minimized risk of data loss
- Improved business success



**AUTOMATED MIRRORING**

Thanks to the integrated mirroring functionality, PoINT Jukebox Manager is able to write data on two different media that can even be located in different jukeboxes. Even if a jukebox should break down, it is ensured that the archiving process can be continued smoothly.

**WINDOWS CLUSTER SUPPORT**

Configuration of the PoINT Jukebox Manager Server can be designed redundantly by using the clustering option.

**FULFILLMENT OF COMPLIANCE DEMANDS**

Every company has to meet diverse demands and laws regarding controlled and compliant data archival storage. Fulfillment of such compliance requirements can be efficiently achieved by means of PoINT Jukebox Manager in combination with optical jukeboxes.

**DECREASED ENERGY COST**

The cost of energy caused by an optical jukebox in contrast to hard disk systems is significantly lower, e.g. archiving of data on optical media saves money in terms of energy expenses.

**MINIMIZED RISK OF DATA LOSS**

Using optical discs provides easy copying and safe storage of data media at different places. Thereby, the risk of data losses can be reduced essentially.

**IMPROVED BUSINESS SUCCESS**

Archived data usually represent valuable information and can help improving business processes in case a fast and easy data access is provided. In particular, this access is provided by PoINT Jukebox Manager, which helps to find and provide important information when needed.

**STORAGE MANAGEMENT**

If besides archiving functionality also comprehensive storage management is desired, the PoINT Jukebox Manager can be enhanced by PoINT Storage Manager software which provides a broad hardware- and technology-independent storage management solution.

**FURTHER INFORMATION**

More detailed information and an evaluation version are provided on [www.point.de](http://www.point.de). Here you can also find descriptions and evaluation versions of further PoINT products.

**CERTIFICATIONS**

- DocuWare AG
- inboxx GmbH
- Open Text Corporation

**PLUG-INS**

- iXOS Jukeman IFS, IXW
- GDA OWFS
- Plasmon Diamond File System

**OPTICAL DISC FILE SYSTEMS**

- ISO 9660
- Joliet
- UDF

**OPTICAL TECHNOLOGIES**

CD-ROM, CD-R, DVD-ROM, DVD+/-R (DL), DVD-RAM, MO, MO/WORM, UDO1, UDO2, PDD, Blu-ray Disc (BD), BDXL

**JUKEBOXES**

ASACA, ASM, BDT, DISC, DSM, GRUNDIG, HP, JVC, Kubota, NETZON, NSM, Pioneer, Plasmon, PowerFile, Sony

**SERVER OPERATING SYSTEMS**

- Windows Server 2003/2008/2012
- Windows XP, Vista, 7, 8

PoINT Software & Systems GmbH believes the information in this publication is accurate as of its publication date. Such information is subject to change without notice. PoINT Software & Systems GmbH is not responsible for any inadvertent errors. The PoINT logo is a registered trademark of PoINT Software & Systems GmbH. DocuWare is a trademark or registered trademark of DocuWare AG. inboxx is a trademark or registered trademark of GFT inboxx GmbH. Open Text is a trademark or registered trademark of Open Text Corporation. All other trademarks belong to their respective owners.

Software and documentation are available in English, Chinese and Japanese.  
Printed in Germany March 2013  
(PIBM80\_e\_04032013)



PoINT Software & Systems GmbH  
Eiserfelder Straße 316  
57080 Siegen, Germany  
fon: +49 271 3841 - 0  
fax: +49 271 3841 - 151  
email: [info@point.de](mailto:info@point.de)  
<http://www.point.de>